

T1 REV

Per escavatori 1.2-2.5 ton / For excavators 1.2-2.5 ton

TRINCIATRICI IDRAULICHE
HYDRAULIC MULCHERS



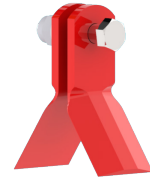
T1 60 REV	
T1 80 REV	



HF1

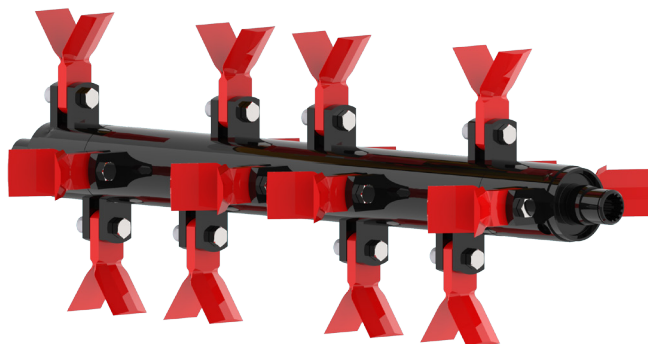
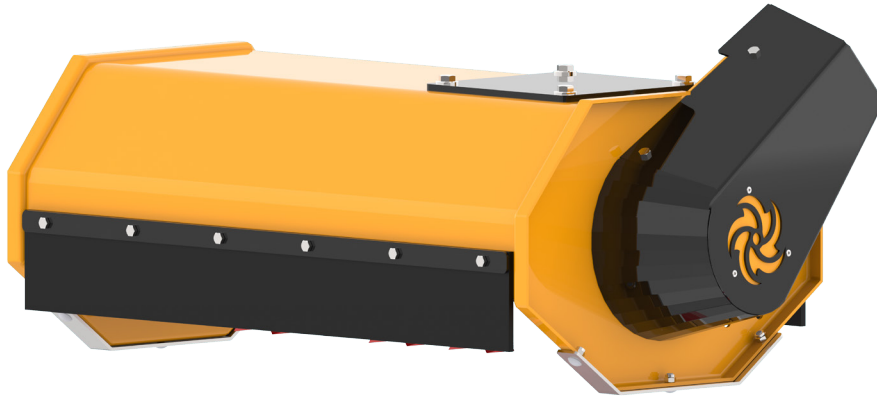
Ø max 3 cm




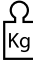



di serie
standard equipment



KF1

Ø max 2 cm



Modello Model	 (ton)	 (cm)	 (LxAxH cm)	 Kg	Cilindrata motore Motor displacement	 (L/min)	 bar (min-max)	Trasmissione Transmission	Rotore Rotor	
T1 60 REV	1.2-2.5	60	85x50x35	70	8-11	20-30	170-220	diretta direct	4 file 4 lines	12
T1 80 REV	1.2-2.5	80	100x50x35	80	8-11	20-30	170-220	diretta direct	4 file 4 lines	16

CARATTERISTICHE TECNICHE E DOTAZIONI STANDARD

- Trasmissione diretta.
- Cofanatura interna a doppia cassa con intercapedine.
- Trinciatrice simmetrica per un taglio più veloce con la rotazione dell'escavatore.
- Bocche d'ingresso e d'uscita completamente identiche.
- Protezione carter motore.
- Rotore a 4 file a coltelli.
- Supporti rotore interni con labirinto per la protezione dei cuscinetti dalle impurità.
- Cuscinetti rotore a doppia corona di sfere orientabili di prima qualità.
- Blocco valvole comprensivo di valvola prioritaria per regolazione della portata olio, antiurto (valvola di max pressione), anti-cavitazione.
- Motore ad ingranaggi.
- Protezioni antinfortunistiche in gomma a norma CE.

TECHNICAL FEATURES AND STANDARD EQUIPMENT

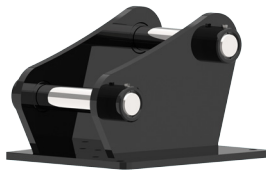
- Direct transmission.
- Internally reinforced with double metal sheet.
- Shearing symmetric head, for a faster cut with the rotation of the excavator.
- Input and output mouths completely identical.
- Protective cover for motor.
- 4 Lines Rotor with austempered blade M1F.
- Inside rotor supports with "labyrinth" for the protection of the bearings from the impurities.
- Double row spherical adjustable bearings of 1st quality.
- Valves block complete with priority valve for adjusting oil flow, anti-shock valve (pressure relief valve), anti-cavitation.
- Gear motor.
- Accident prevention rubber protections according to EC directives.

ACCESSORI

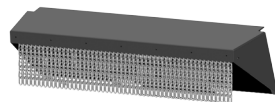
- 1 - Attacco sella a perni.
- 2 - Kit tubi Lg. 2 metri.
- 3 - Protezione a catene anteriore e posteriore.
- 4 - Rullo di appoggio.
- 5 - Supporto autolivellante (+30kg).
- 6 - Detrazione blocco valvole, solo anticavitazione.

ACCESSORIES

- 1 - Mounting hitch & pins.
- 2 - Hoses kit Lg. 2 meters.
- 3 - Front, back chain protection.
- 4 - Feeler roller.
- 5 - Self-levelling support (+30kg).
- 6 - Valves block deduction, only anticavitation.



1



3



4



5